

# **MUD MIXER**

**MIXING MUD HAS NEVER BEEN THIS EASY...  
OR THIS CLEAN!**



## **OWNERS MANUAL & ASSEMBLY INSTRUCTIONS**

---

# MUD MIXER<sup>®</sup>

---

This machine is designed primarily for mixing and distributing bagged concrete and/or mortar products, and is intended for use by contractors, landscapers, fence builders, and residential homeowners in completing professional and DIY projects.

Read this information carefully to learn **how to operate** and **maintain your product properly** and to avoid injury and product damage.

You are responsible for operating the product properly and safely.

You may contact MudMixer directly at [www.MudMixer.com](http://www.MudMixer.com) for product safety and operation training materials, accessory information, help finding a dealer, or to register your product.

Whenever you need service, genuine MudMixer parts, or additional information, contact an Authorized Service Dealer or MudMixer Customer Service and have the model and serial numbers of your machine ready.

**IMPORTANT:** With your mobile device, you can scan the QR code on the rear electrical box to access warranty, parts, and other product information.

---

---

# TABLE OF CONTENTS

---

Safety & Specs.....	1
Parts & Hardware List .....	1
Assembly Instructions.....	2
Assembly Video (via QR code).....	3
Operating Instructions .....	5
Maintenance Schedule .....	6
Maintenance Warranty.....	7

---



**Figure 2**  
Safety-alert symbol

This manual identifies potential hazards and has safety messages identified by the safety-alert symbol (Figure 2), which signals a hazard that may cause serious injury or death if you do not follow the recommended precautions.

Publication Date: 07/2023

---

# MudMixer MMXR-3221

## Machine Overview



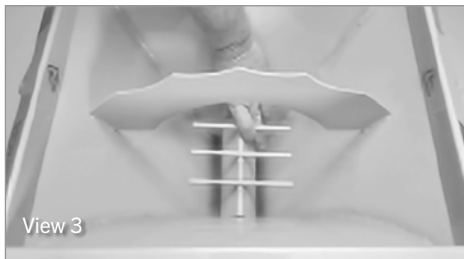
View 1



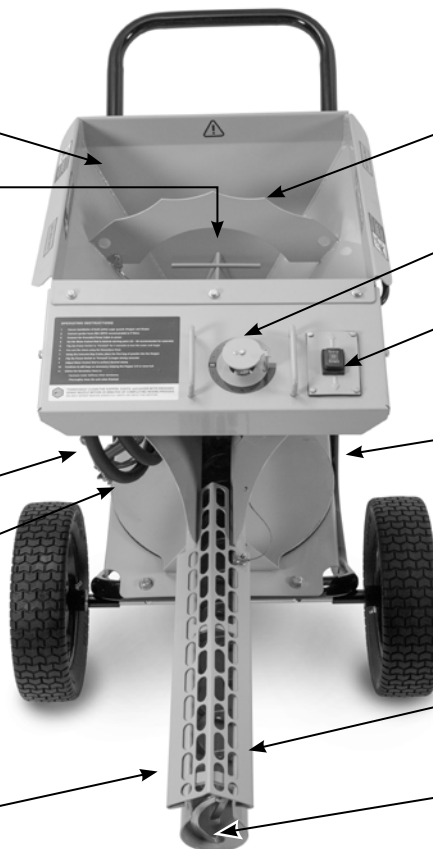
View 2



1. Open the QR Code reader on your smartphone.
2. Hold your device over the QR Code so it's clearly visible within your smartphone's screen. Your phone will automatically scan the code and prompt you to open a browser window. (It may take a few seconds on some devices. Some QR Code readers may require you to press the button to take a picture of the code.) After your smartphone reads the code, it will navigate to the online video.
3. PRESS PLAY on the video.

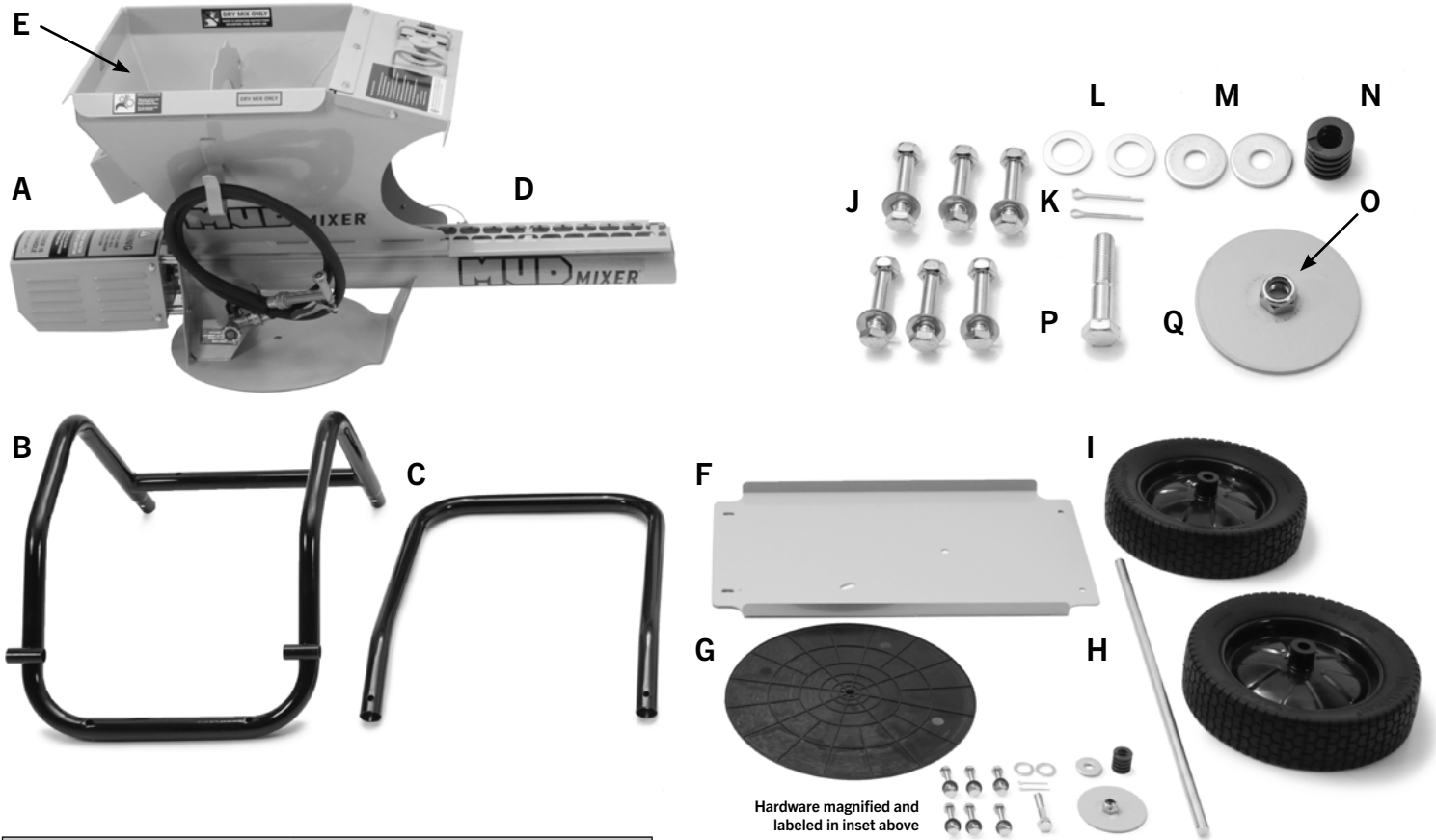
**Hopper****Hopper Auger Guard  
(inside Hopper)***see View 3 below*

View 3

**T-Valve****Secondary Hose****Chute****Concrete Bag Cutter****Water Control Dial****Power Switch****Grounded Power Cable****Flat Free Tire****Chute Auger Guard****Auger (inside chute)**

# MudMixer MMXR-3221

Manual Part Number: MMXR-P316



DETAILS	
Overall Length	66.5 in.
Overall Width	22.5 in.
Overall Height	35 in.
Chute Height	16 in.
Weight	145 lbs.
Hopper Capacity	120 lbs.
Body Construction	14 Gauge High-Strength Steel
Frame Construction	1 in. Steel Pipe
Tires	Marathon Flat-Free
ELECTRICAL	
Electrical Requirements	120-volt
Cord Length	36 in.
Running Amps	1.6
MOTOR	
Motor HP	½ HP
Motor Protection Rating	IP55
SAFETY FEATURES	
Hopper Auger Guard	
Chute Auger Guard	
Grounded Power Cable with GFCI	
Water-tight electrical boxes and connections	

PARTS LIST - MUDMIXER MODEL MMXR-3221	
A	MudMixer - Body
B	MudMixer - Frame
C	MudMixer - Frame Handle
D	Auger Guard - Chute
E	Auger Guard - Hopper
F	Base Plate
G	Circular Pivot Bushing
H	Wheel Axle
I	Flat-Free Wheels
HARDWARE PACKAGE LIST	
J	M10 x 50 Bolts, Washers & Nuts (6)
K	Axle Washer Pin (2)
L	Axle Washer (2)
M	Base Plate Small Washers (2)
N	Base Plate Spring (1)
O	Base Plate Nut (1)
P	Base Plate M14 x 65 Bolt (1)
Q	Base Plate Big Washer (1)

# MudMixer MMXR-3221

Assembly Instructions • Steps 1 - 3a

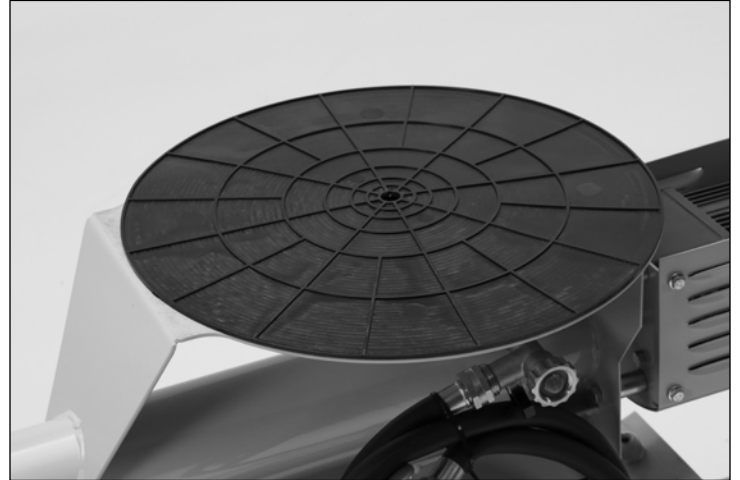
**Tools Needed:** 1.) Channel Locks 2.) 5/8" Wrench 3.) 7/8" Wrench

## STEP 1



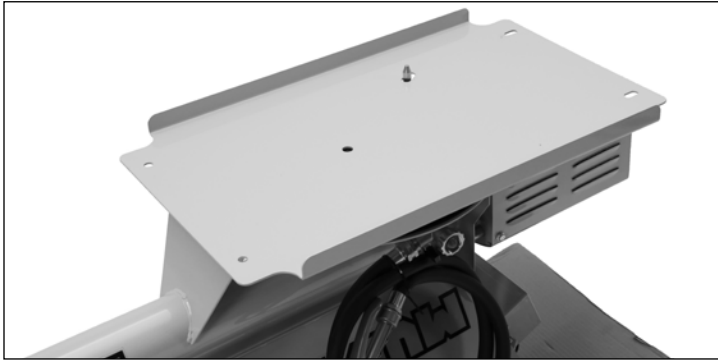
Lay (A) MudMixer upside down on provided cardboard cover

## STEP 2



Lay (G) bushing on mixer base, webbing up

## STEP 3a



## STEP 4 & 5



## STEP 3b



Secure (F) base plate to mixer via (Q) large washer, (M) small washer (2), (N) spring, and (O) nut

**Visit: [mudmixer.com/videos](https://mudmixer.com/videos)  
to learn more about your MudMixer!**

Secure (B) frame to base plate via (J) bolts, nuts, and washers (4)

Attach (C) frame handle to frame via (J) bolts, nuts, and washers (2)



# MudMixer MMXR-3221

Assembly Instructions • Steps 3b - 4

## STEP 6a

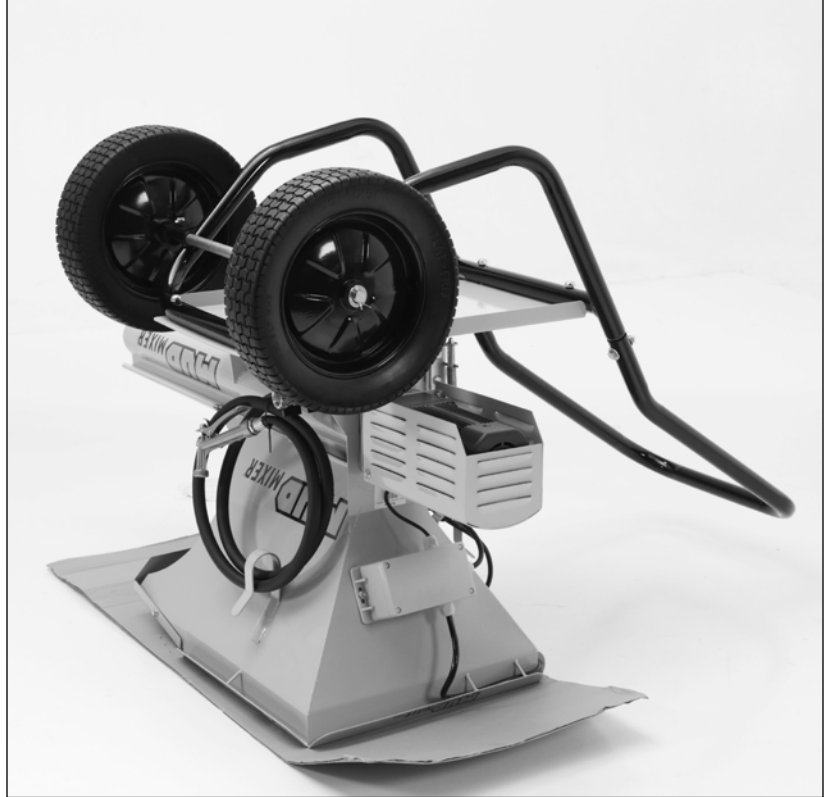


## STEP 6b



Attach MudMixer (I) tires to frame via (H) axle, (K) pins, and (L) washers

## STEP 7



Pivot the mixer 90 degrees and use the handle to flip the mixer into the upright position

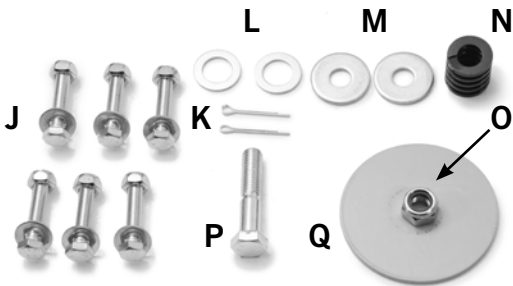
### PAGE 2 HARDWARE (BASE PLATE PARTS M-Q)

J	M10 x 50 Bolts,	M	Small Washers (2)
	Washers & Nuts (6)	N	Spring (1)
K	Axle Washer Pin (2)	O	Nut (1)
L	Axle Washer (2)	P	M14 x 65 Bolt (1)
		Q	Big Washer (1)

## STEP 8



Pivot mixer 90 degrees to secure pivot latch



# MudMixer MMXR-3221

## Operating Instructions

1. Ensure installation of both Safety Auger Guards (Hopper and Chute).
2. Connect garden hose (Min 40PSI recommended) to T-Valve.
3. Connect the Grounded Power Cable to power.
4. Set the Water Control Dial to desired starting point (35 - 50 recommended for concrete).
5. Flip the Power Switch to "Forward" for 5 seconds to test the water and Auger.
6. Pre-wet the Chute using the Secondary Hose.
7. Using the Concrete Bag Cutter, place the first bag of powder into the Hopper.
8. Flip the Power Switch to "Forward" to begin mixing concrete.
9. Adjust Water Control Dial to achieve desired slump.
10. Continue to add bags as necessary, keeping the Hopper 3/4 or more full.
11. Utilize the Secondary Hose to:
  - Increase water delivery when necessary
  - Thoroughly clean the unit when finished
12. **THOROUGHLY CLEAN THE HOPPER, CHUTE, and AUGER WITH PROVIDED SPRAY NOZZLE WITHIN 20 MINUTES OF COMPLETING MIXING PROCESS**



**DO NOT SPRAY WATER DIRECTLY  
ONTO OR INTO THE MOTOR**

---



# MudMixer MMXR-3221

## Maintenance Schedule



**WARNING - DO NOT CLEAN OR PERFORM MAINTENANCE ON THE MUDMIXER WHILE IT IS HOOKED TO ELECTRICITY. ENSURE ELECTRICAL SAFETY USING PROPER PPE AND LOCKOUT TAGOUT.**



**DO NOT SPRAY WATER DIRECTLY ONTO OR INTO THE MOTOR**

### General Cleaning

- After using the **MudMixer**, it is ***absolutely necessary to clean the unit thoroughly.***
- We recommend using the **MudMixer Secondary Hose** and a rag to ensure the unit is free of concrete residue of any kind after the end of each project.

### Motor Cleaning

- Use a rag to wipe the motor clean if necessary.
- **DO NOT SPRAY WATER DIRECTLY ONTO OR INTO THE MOTOR.**

### Wheel Maintenance

- Use the grease ports on the wheels to grease the wheels when necessary.

### Solenoid Maintenance

- If unused for more than 6 months, disassemble solenoid for cleaning to prevent internal rust.
- **COLD WEATHER WARNING:** To prevent bursting components, ensure all water is removed from plumbing system if temperature will drop below 32°F.

# MudMixer MMXR-3221

## Warranty Information

The **MudMixer**® Company promises to repair the **MudMixer**® product if it is defective in materials or workmanship for the period listed below.

One Year for any unit used for any purpose including personal, family, or household use, rental, or commercial.

This warranty extends to the original retail purchaser only and commences on the date of the original retail purchase.

Any part of this product manufactured or supplied by **MudMixer**® and found in the reasonable judgment of the **MudMixer**® Company to be defective in material or workmanship will be repaired or replaced without charge for parts and labor by the **MudMixer**® company or an authorized dealer.

The product, including any defective part, must be returned to the **MudMixer**® company or to the authorized **MudMixer**® dealer where the item was purchased within the warranty period. The expense of delivering the product to the dealer for warranty work and the expense of returning it back to the owner after repair or replacement will be paid by the owner. The **MudMixer**® company's responsibility with respect to claims is limited to making the required repairs or replacements and no claim of breach of warranty should be cause for cancellation or rescission of the contract of any **MudMixer**® brand product. Proof of purchase will be required by the dealer to substantiate any warranty claim before warranty work must be performed by the **MudMixer**® company.

This warranty is limited to 365 days from the date of original retail purchase for any **MudMixer**® brand product that is used for rental or commercial purposes, or any other income producing purpose.

This warranty does not cover any **MudMixer**® brand product that has been subject to misuse, neglect, negligence, or accident, or that has been operated in any way contrary to the operating instructions as specified in the operator's manual. This warranty does not apply to any damage to the product that is the result of improper maintenance or to any product that has been altered or modified. The warranty does not extend to repairs made necessary by normal wear or by the use of parts or accessories which are either incompatible with the **MudMixer**® product or adversely affect its operation, performance, or durability.

The **MudMixer**® company reserves the right to change or improve the design of any **MudMixer**® brand product without assuming any obligation to modify any product previously manufactured.

The warranty applies only if you perform the routine maintenance specified in the Operator's Manual. **MudMixer**® makes no other express warranty.

ALL IMPLIED WARRANTIES ARE LIMITED IN DURATION TO THE STATED WARRANTY PERIOD. ACCORDINGLY, ANY SUCH IMPLIED WARRANTIES INCLUDING MERCHANTABILITY, FITNESS FOR A PARTICULAR PURPOSE, OR OTHERWISE, ARE DISCLAIMED IN THEIR ENTIRETY AFTER THE EXPIRATION OF THE APPROPRIATE ONE YEAR OR NINETY DAY WARRANTY PERIOD. MUDMIXER'S OBLIGATION UNDER THIS WARRANTY IS STRICTLY AND EXCLUSIVELY LIMITED TO THE REPAIR OR REPLACEMENT OF DEFECTIVE PARTS AND MUDMIXER DOES NOT ASSUME OR AUTHORIZE ANYONE TO ASSUME FOR THEM ANY OTHER OBLIGATION. SOME STATES DO NOT ALLOW LIMITATIONS ON HOW LONG AN IMPLIED WARRANTY LASTS, SO THE ABOVE LIMITATION MAY NOT APPLY TO YOU. MUDMIXER ASSUMES NO RESPONSIBILITY FOR INCIDENTAL, CONSEQUENTIAL, OR OTHER DAMAGES INCLUDING BUT NOT LIMITED TO, EXPENSE OF RETURNING THE PRODUCT TO THE MUDMIXER COMPANY OR AN AUTHORIZED MUDMIXER SERVICE CENTER OR EXPENSE OF DELIVERING IT BACK TO THE OWNER, MECHANICS TRAVEL TIME, TELEPHONE CHARGES, RENTAL OF A PRODUCT DURING THE TIME WARRANTY SERVICE HAS BEEN PERFORMED, TRAVEL, LOSS OR DAMAGE TO PERSONAL PROPERTY LOSS OF REVENUE, LOSS OF USE OF THE PRODUCT, LOSS OF TIME, OR INCONVENIENCE. SOME STATES DO NOT ALLOW THE EXCLUSION OR LIMITATION OF INCIDENTAL OR CONSEQUENTIAL DAMAGES, SO THE ABOVE LIMITATION OR EXCLUSION MAY NOT APPLY TO YOU.

---

For additional questions regarding warranty terms and conditions, you may contact the **MudMixer**® Company at:  
**MudMixer**®

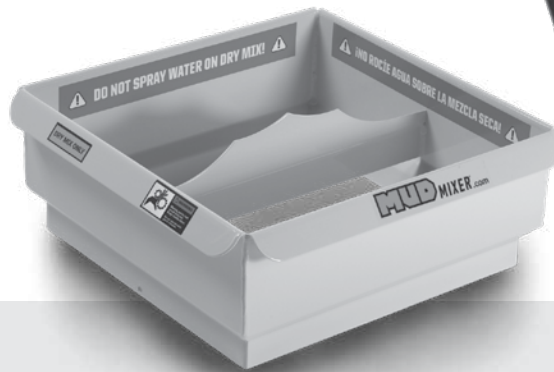
[www.mudmixer.com](http://www.mudmixer.com) | (806) 515-4683



# MUDMIXER EXTENSIONS

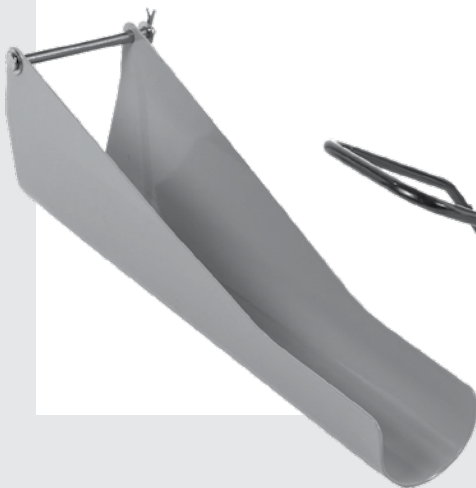
## HOPPER EXTENSION \$325

The MudMixer Hopper Extension allows users to bring the full capacity of the machine to **300 pounds of mix** compared to the 120 pound capacity of the included hopper.



## CHUTE EXTENSION \$185

With 15°, 25°, and 35° angle options, the chute extension provides an **additional 18" of reach** for those hard-to-access areas. The chute extension allows for more accuracy and less splashing while delivering your mix.



[shop.mudmixer.com](http://shop.mudmixer.com) | 1-806-515-4MUD

